

Studio TC2

BBC Studioworks, Television Centre, Wood Lane, London W12 7RJ | Tel: +44 (0) 203 327 6900

Key to Symbols:		Notes:	
HL	House Lights	-MAX HEIGHT OF SCENERY HOOKS IS 1111 mm	
FE	Fire Extinguisher	-MAX HEIGHT OF LIGHTING BARS IS 4.80M	
FE	Fire Lane	-FLOOR TO UNDERSIDE OF GRID 7.62M	
SP	Service Point	-STUDIO FLOOR GRID MARKINGS - 600mm SQ.	
	Castella Beams		
	Main Roof Trusses		
	Scenic Hoists - 120Kg SWL		
	Scenic Setting Floor Grid Markings (600mm sq)		
	Studio Floor Centre Markings (max. 1.2 Level 4, Max. 2.4 Level 5)		
	Studio Gantry Outline		
	Audience Seating Outline		
	Audience Seating		
	Audience Seating Numbers (100 Seated + 4 Wheelchairs)		
	Lighting Hoist Outline SWL 160kg		
	Wall Box GS Power Ref: JWB 125A 3p 500V 1 x 60 125A 1 x 60 125A 1 x 60 125A 3p 500V		Lighting Hoist Control Panel
	32A SP-NE		Lighting Wall Box
	62A SP-NE		Scenic Hoist Control Panel
			Technical Wall Box

PRODUCTION DESIGN NOTES:

PRODUCTION
COSTING NO.
DESIGNER
DIRECTOR
DRAWN BY
ZERO DATE
PRODUCTION DATE

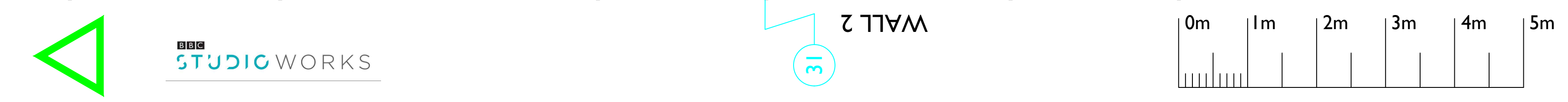
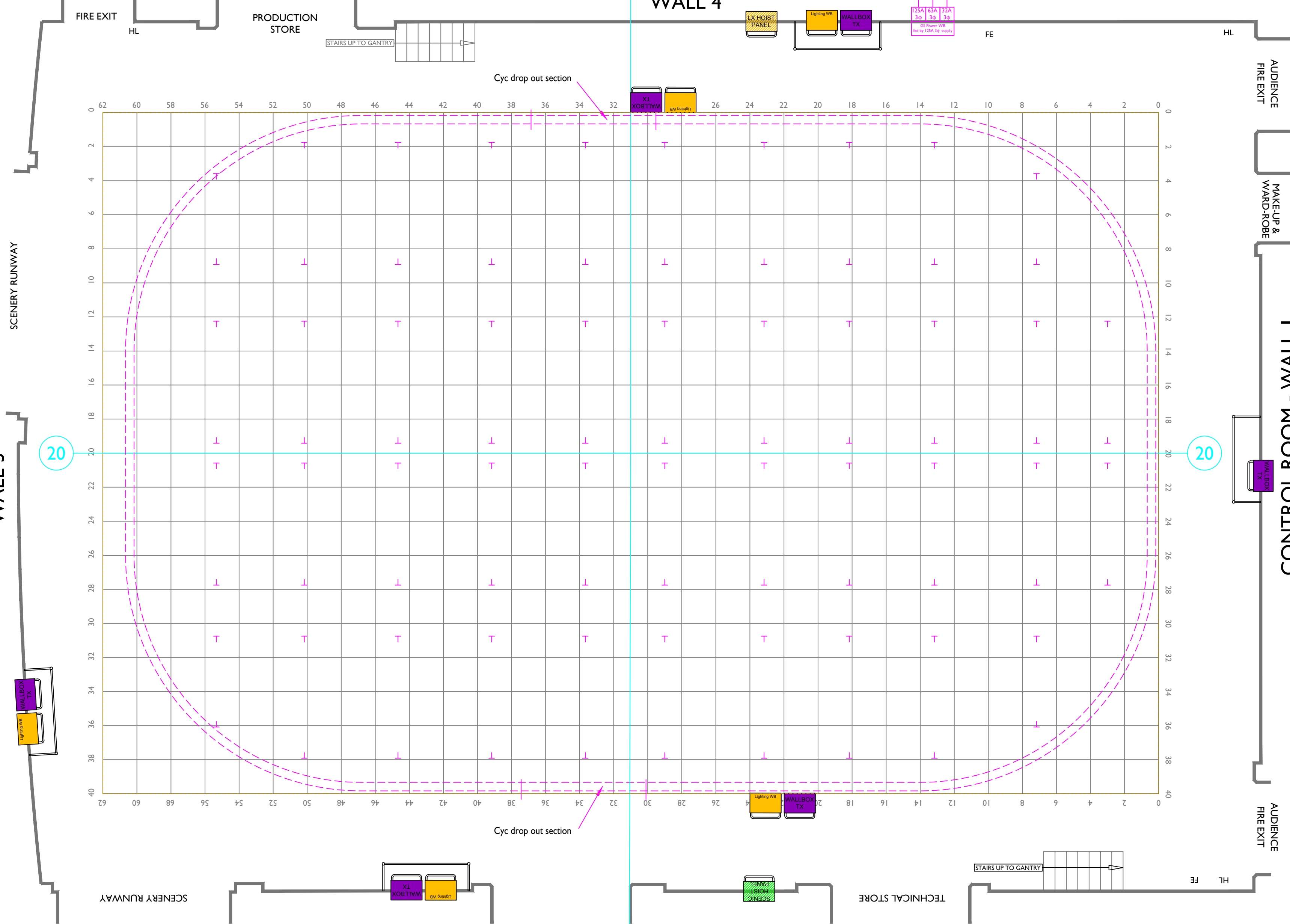
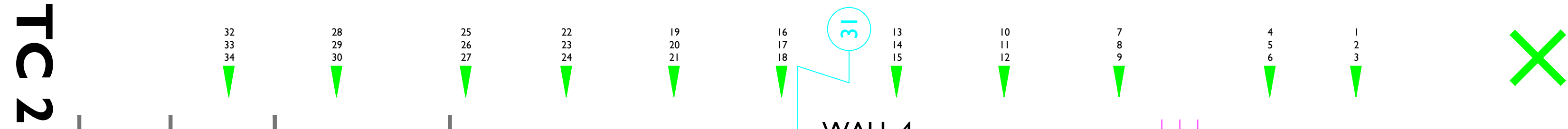


BBC Studioworks strives, with its best endeavour, to ensure that the information contained within these plans is accurate. However, it must be understood that if there are any specific requirements, critical measurements, or any doubt, as to the exact conditions on site, it is strongly recommended that a site survey is conducted prior to any works being undertaken.

Taking this simple precaution can and does save a lot of embarrassment.

Please contact BBC Studioworks on +44 (0)203 327 6900 or your projects Studio Resource Manager for further assistance.

© BBC Studioworks Ltd 2017
Issued August 2017. All previous versions superseded. Errors & Omissions Excepted (E&OE)
Updates: Ver 100 31 July 2017 PSB Vision



TC 2

SCENERY RUNWAY

WALL 3

WALL 4

WALL 2

AUDIENCE FIRE EXIT

MAKE-UP & WARD-ROBE

CONTROL ROOM - WALL 1

AUDIENCE FIRE EXIT

TECHNICAL STORE

PRODUCTION STORE

STAIRS UP TO GANTRY

STAIRS UP TO GANTRY

HL

FE

Cyc drop out section

Cyc drop out section

20

20

31

31

32
33
34

28
29
30

25
26
27

22
23
24

19
20
21

16
17
18

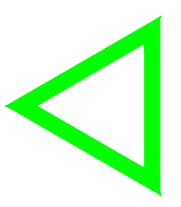
13
14
15

10
11
12

7
8
9

4
5
6

1
2
3



Lighting Design Plan Metric Scale 1:50@A2

Studio TC2

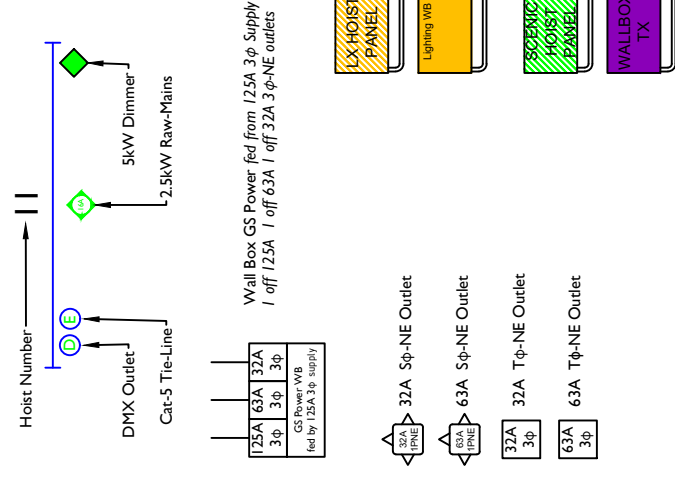
BBC Studioworks, Television Centre, Wood Lane, London W12 7RJ | Tel: +44 (0) 203 327 6900

PRODUCTION

STUDIO DATES

LIGHTING

LIGHTING HOIST OUTLETS & REFERENCES



LIGHTING FACILITIES

- **Lighting Hoists**
 - o 1x 3.0kW Dimmer
 - o 1x 1.664 Socket Outlet
 - o 1x 2.5kW Raw Mains
 - o 1x 1.664 Socket Outlets Fed from DMX patch panel
 - o 1x DMX Outlet
 - o 1x DMX Outlet Fed from patch panel
 - o 160Kg
 - o Hoist Max Height 6.8m
- **Lighting Hoist Cyclorama Nos C1-C26**
 - o 1x 2.5kW Raw Mains
 - o 1x 1.664 Socket Outlets Fed from DMX patch panel
 - o Hoist SWL 25kg
 - o Hoist Max Height 7.10m
- **Floor & Gantry Outlets**
 - o 1x 5kW Dimmer
 - o 1x 32A Socket Outlet
- **Scenic Hoists**
 - o Hoist SWL 120Kg
 - o Hoist Max Height 7.777.0m

